

Back in a leap year when the EU grew from 15 to 25 member states, Ireland held the EU presidency and was planning an international conference in Malahide. The theme was biodiversity, its value, sustainable use and how to halt the alarming loss of genetic varieties, species and habitats.

At the same time this fish shaped monument was being created. Each EU member state was to be represented by an animal, plant or fungus. Citizens were asked to make proposals. Farmers, industry, environmental groups, scientists, schools, colleges and governments participated. The final choice of 25 is to give a glimpse of the variety, beauty, roles, adaptations, interdependence and ecosystem services of our shared European biodiversity.



The monument was unveiled on May 25th 2004 by Nicolas Hanley, Head of Nature Unit, DH ENV European Commission, Pat the Cope Gallagher TD, Minister of State Department of the Environment, Heritage and Local Government, Cllr. Sean Dolphin, Cathaoirleach Fingal County Council and Karin Dubsy, Coastwatch Europe.

Sponsors

Monument and plaque costs were sponsored by the Department of the Environment, Heritage and Local Government, the Austrian government, Fingal County Council and the Greek Island of Chios Authority. Wexford County Council donated the Hook Head millstone and Decklad Trading the Bullaun stone.

Monument Design Team

Susan Calder - Illustrator
 Capt Owen Dignan - Sundial expert
 Karin Dubsy - Ecologist and team leader
 Gustavo De Filippo - Architect
 Peter Flynn - Consultant engineer
 Katrin O Shea - Artist
 Further help and gratis expert advice to the team by Prof Werner Blau, Paul Dubsy, Ann James, Michael Lynch, Kevin Mc Cann, Dr. Roger West, Dr. Mathew Parks and Hans Visser.

Species

BirdLife, Coastwatch, EEB, European Lichenologist network and PlantLife Europe collected species information from the EU of 25 and helped prepare the shortlist. The final choice of species was made in meetings hosted by Trinity College Dublin. Embassies of Austria, Belgium, Czech Republic, Estonia, Finland, France, Greece, Italy, Latvia, Poland, Portugal, Slovenia and Sweden participated.

Monument Execution

Shane Holland Design Workshops
 Cieran O'Brien Sculptors Wexford
 Fingal County Council Parks Department

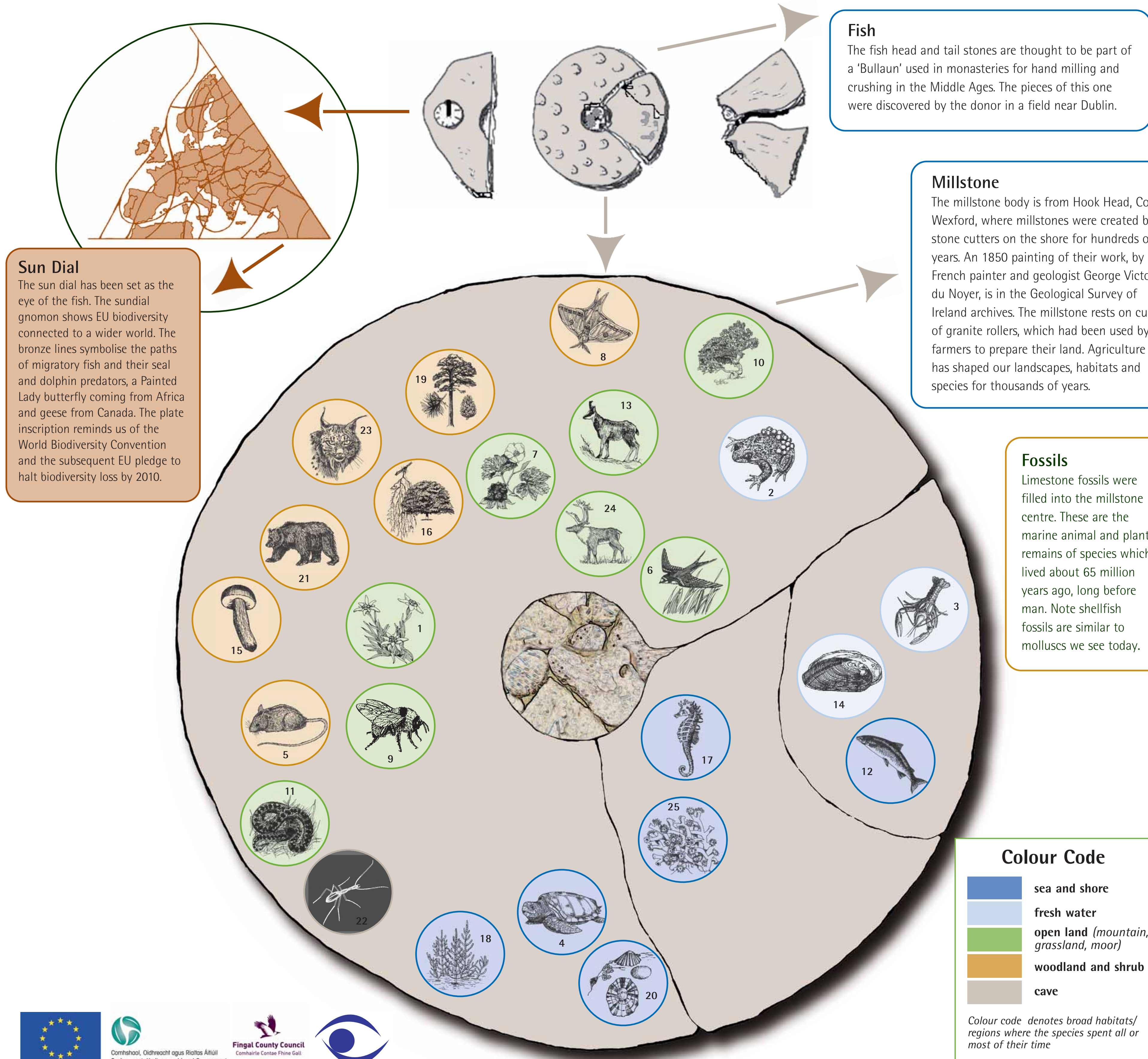
Interpretative Panel

Content: Karin Dubsy with Katrin O Shea
 Final Design: Environmental Publications
 Print: Designtec
 Advice and help Hans Visser, Biodiversity Officer, Fingal County Council and Zoology Department, TCD.

Further Information

Please ask in Malahide Castle for the Irish version of this panel, poster and CD. If you have comment or information on 'your' species, please contact Coastwatch: kdubsy@coastwatch.org

EU Biodiversity and Enlargement monument



Country	Species
Chosen species in English, Latin, national language	
1 Austria	Edelweiss <i>Stella alpina</i> Edelweiss
2 Belgium	Midwife Toad <i>Alytes obstetricans</i> Crapaud accoucheur/ Vroedmeesterpad
3 Czech Republic	White clawed Crayfish <i>Astacus fluviatilis</i> Rak říani
4 Cyprus	Loggerhead Turtle <i>Caretta caretta</i> Caretta
5 Denmark	Birch Mouse <i>Sicista betulina</i> Birkenmus
6 Estonia	Swallow <i>Hirundo rustica</i> Suitsupääsuke
7 Finland	Cloudberry <i>Rubus chamaemorus</i> Suomuurain, 'hilla' or 'lakka'
8 France	Isabelle of France Moth <i>Graellsia isabellae galliaegloria</i> Isabelle de France
9 Germany	Great Yellow Bumble bee <i>Megabombus distinguendus</i> Deichhummel
10 Greece	The Mastich Tree <i>Pistacia lentiscus var Chia</i> Mastichodendro
11 Hungary	Meadow Viper <i>Vipera ursinii</i> Rákosi vipera
12 Ireland	Salmon <i>Salmo salar</i> Bradán
13 Italy	Chamois Goat <i>Capri camoscio</i> Rupicapra rupicapra
14 Latvia	Fresh water Pearl Mussel <i>Margaritifera margaritifera</i> Ziemeļu upešpīrleņe
15 Lithuania	Boletus <i>Boletus fechtneri</i> Fechtnerio baravykas
16 Luxemburg	Beard Lichen <i>Usnea filipendula</i> Bartflechte
17 Malta	Long nosed Seahorse <i>Hippocampus ramosus</i> "iemel tal-Bahar
18 Netherlands	Glasswort <i>Salicornia europaea</i> Zeekraal
19 Poland	Pine Tree <i>Pinus sylvestris</i> Świerk
20 Portugal	Black footed Limpet <i>Patella depressa</i> Lapas
21 Slovakia	Brown Bear <i>Ursus arctos</i> Medveí hneď
22 Slovenia	Cave Beetle <i>Leptodirus hochenwarti</i> Drobnovratnik
23 Spain	Iberian Lynx <i>Linx pardinus</i> Lince Iberico
24 Sweden	Reindeer <i>Rangifer tarandus</i> Ren
25 UK	Cold water Coral <i>Lophelia pertusa</i> Cold water Coral

